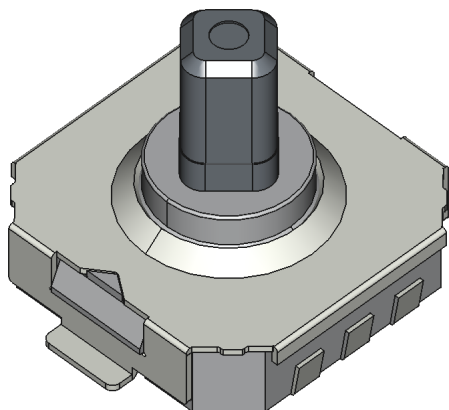


FST070 Series Five-Way Switch



Feature:

- 1.Long Lifespan
- 2.Low Prople
- 3.Surface-Mount

Application:

- Audio
- Headphones
- Walkie-Talkie
- Drone Controller
- Multimedia

Mechanical Characteristics

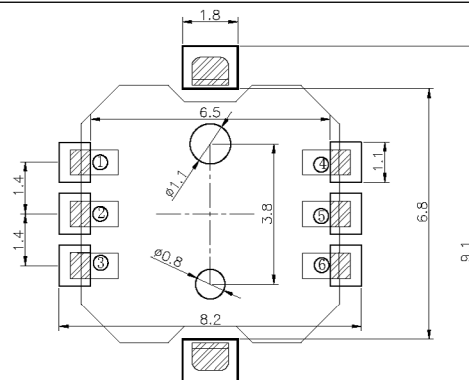
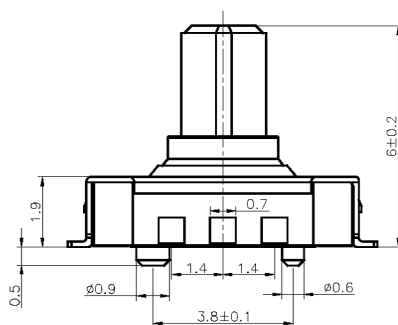
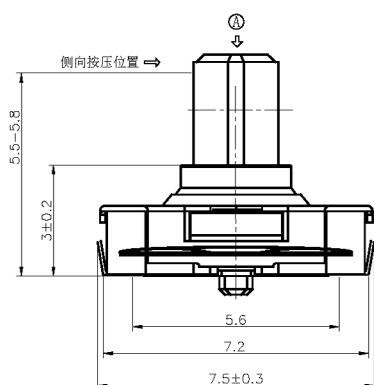
Operating Force	1.6±0.5N
Full Travel	0.25±0.1mm
Return Force	≥ 0.4N

Electrical Characteristics

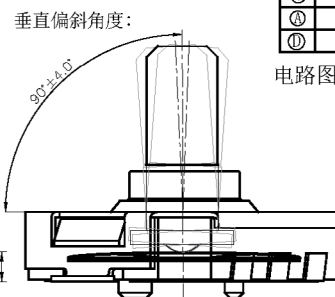
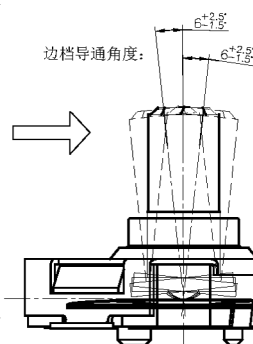
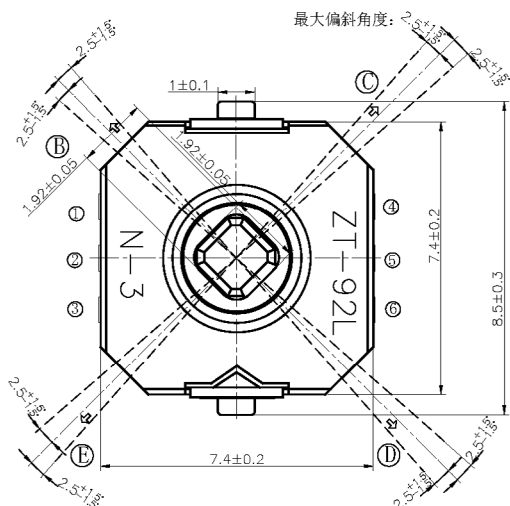
Contact Resistance	$\leq 50\text{m}\Omega$
Insulation Resistance	$\geq 100\text{ m}\Omega$
Dielectric Voltage proof	AC 250V

Endurance Characteristics

Number of Cycles	100,000 cycles
------------------	----------------



安装图(PCB LAYOUT PLAN)



CIRCUIT DIAGRAM

ⓑ	①	②				
Ⓔ		②	③			
Ⓒ		②		④		
Ⓐ		②			⑤	
ⓓ		②				⑥

电路图 (CIRCUIT DIAGRAM)

未指定容許±尺寸之公差	
6以下	±0.1
6以上18以下	±0.15
18以上50以下	±0.2
50以上125以下	±0.25
125以上(每增加50,公差大0.05)	
角度	±2°
整體中心偏移0.05以內	